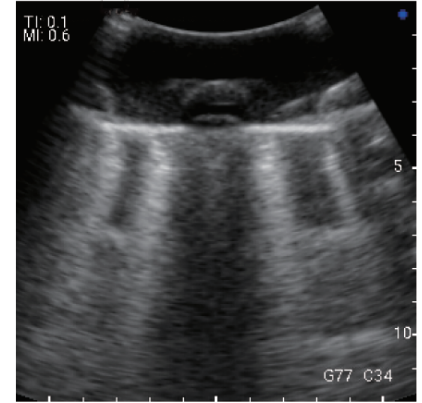
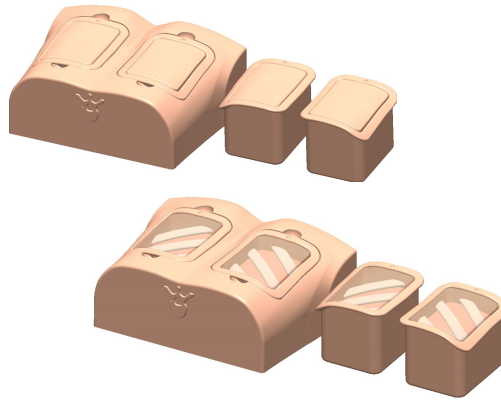


NEW

# Lung Ultrasound Training Phantom ECHOLUNG

*-A-LINE, B-LINE and pneumonia-*



Because of the influx of patients from the COVID-19 pandemic, CT and X-ray machines are increasingly difficult to access for diagnostic purposes. As such, lung ultrasound is one solution to minimize exposure for medical professionals, and Kyoto Kagaku has developed a phantom to practice the basics of this procedure.

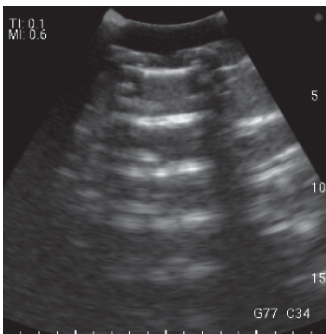
## Features

- Four kinds of units: A-LINE, B-LINE(few), B-LINE (many), pneumonia and pleural effusion for training in the basics of lung ultrasound.
- Anatomy includes: lung, chest wall, ribs
- No special storage needed
- Suitable for training in large groups
- High durability
- Lung slide module and COVID-19 module under development

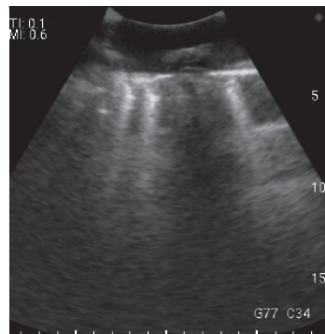
## Set includes

- Main Body
- Four kinds of lung modules
- Instruction manual
- Talcum powder
- Storage case

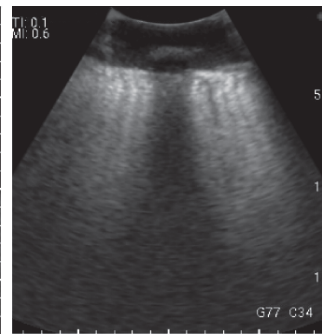
## Ultrasound modules



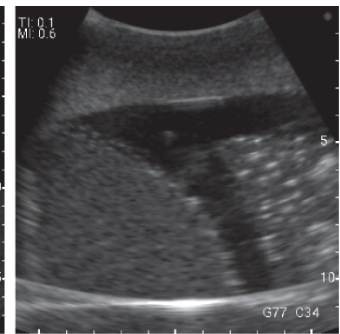
A-LINE



B-LINE(few)





B-LINE(many)



Pneumonia and pleural effusion

Specifications are subject to change without prior notice.



 **KYOTO KAGAKU co.,LTD**

 <http://www.kyotokagaku.com>  
 [rw-kyoto@kyotokagaku.co.jp](mailto:rw-kyoto@kyotokagaku.co.jp)



### Hong Kong Representative Office

Level 60, One Island East,  
18 Westlands Road, Island East, Hong Kong  
 +852-3978-1365  +852-3978-1199

### Worldwide Inquires and Ordering Head Office and Factories



15 Kitanechoya-cho, Fushimi-ku,  
Kyoto, 612-8388, Japan  
 +81-75-605-2510  +81-75-605-2519

### European Representative Office



De-Saint-Exupery-Str.10,  
60549 Frankfurt, Germany  
 +49-69-5060-28160  +49-69-5060-28170



All American regions  
**KYOTOKAGAKU AMERICA INC.**

 <http://www.kkamerica-inc.com/>  
\* United States only  
 [info@kkamerica-inc.com](mailto:info@kkamerica-inc.com)

3109 Lomita Boulevard, Torrance,  
CA 90505-5108, USA

 +1-310-325-8860  
 +1-310-325-8867